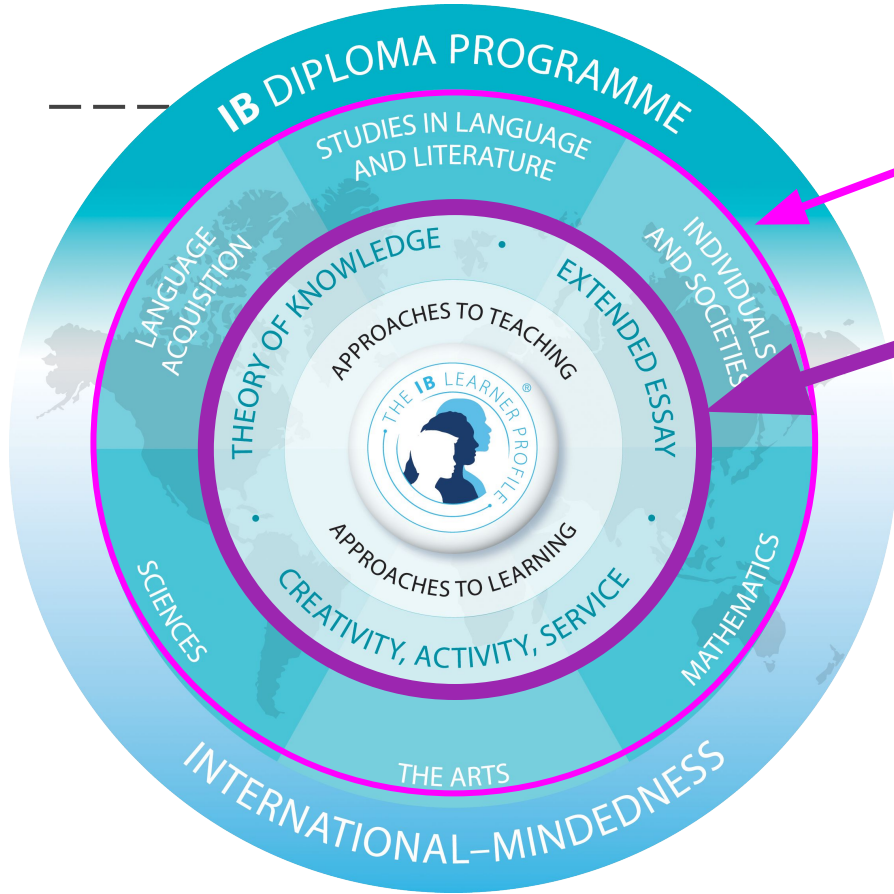


Introduction to the Extended Essay

For Candidates and Parents/Guardians

IB Diploma Programme



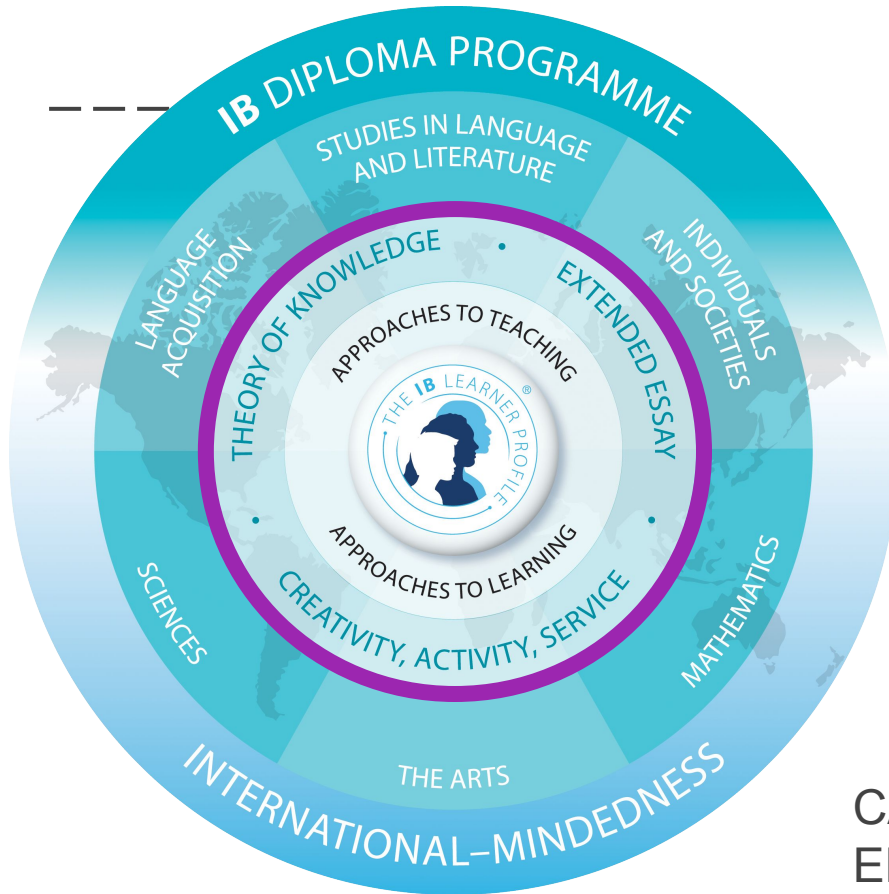
Courses

- Six IB Subject Courses

IB Core components

- CAS - Creativity, Activity, Service
- EE - Extended Essay
- TOK - Theory of Knowledge

IB Diploma Programme Core



Reach out to IB Core teachers for support

Creativity-Activity-Service (CAS)

- Pass/fail
- Requirements either met or not met

Theory of Knowledge (TOK)

- Reflect on the nature of knowledge
- Consider how we know what we claim to know
- Grade: A-E

Extended Essay (EE)

- 4000 independent research essay
- Grade: A-E

CAS Coordinator: elizabeth.burgos@apsva.us

EE Coordinator: david.peters@apsva.us

What is the Extended Essay?

— — —
The Extended Essay, or EE, is an independent academic writing project on a topic chosen by the student

The essay has a **4000 word maximum**

There is also a **500 word reflection** that is completed at the end of the research and writing process

IB recommends students spend approximately **40 hours** on the EE.

At WL, the EE process runs from December of 11th grade to November of 12th grade.

What are the aims of the EE?

The aims of the extended essay are for students to:

1. Engage in independent research with intellectual initiative and rigor
2. Develop research, thinking, self-management and communication skills
3. Reflect on what has been learned throughout the research and writing process.

Why do they have to do this?

Getting the IB Diploma requires 24 points, earned on their various subject exams, as well as earning a passing mark on the EE. For some, the EE points will help them achieve the needed points.

		Theory of knowledge					
		Grade A	Grade B	Grade C	Grade D	Grade E	No grade N
Extended essay	Grade A	3	3	2	2	Failing condition	Failing condition
	Grade B	3	2	2	1	Failing condition	Failing condition
	Grade C	2	2	1	0	Failing condition	Failing condition
	Grade D	2	1	0	0	Failing condition	Failing condition
	Grade E	Failing condition	Failing condition	Failing condition	Failing condition	Failing condition	Failing condition
	No grade N	Failing condition	Failing condition	Failing condition	Failing condition	Failing condition	Failing condition

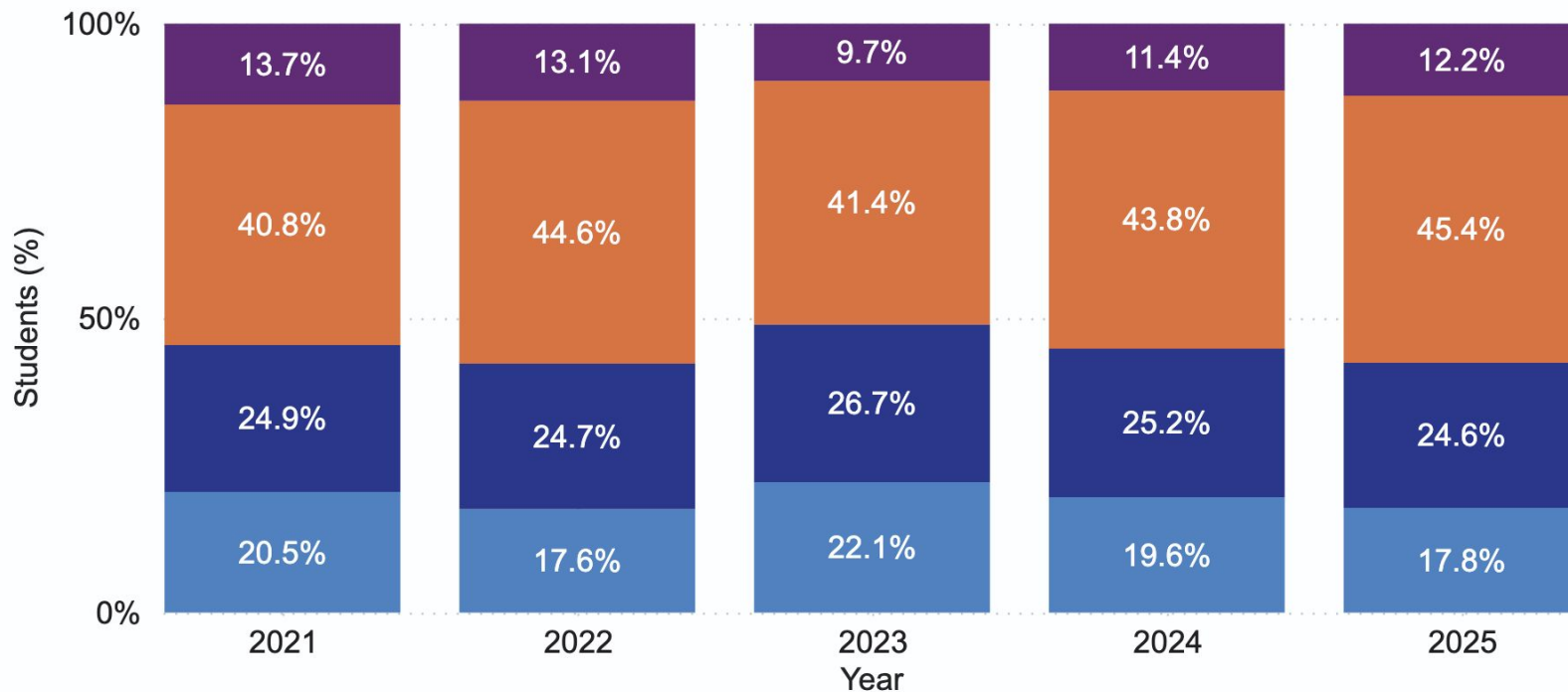
DP diploma results - core points

Global results - May 2025

Core points -
combination of
TOK & EE
results

Distribution of core points

● 0 ● 1 ● 2 ● 3



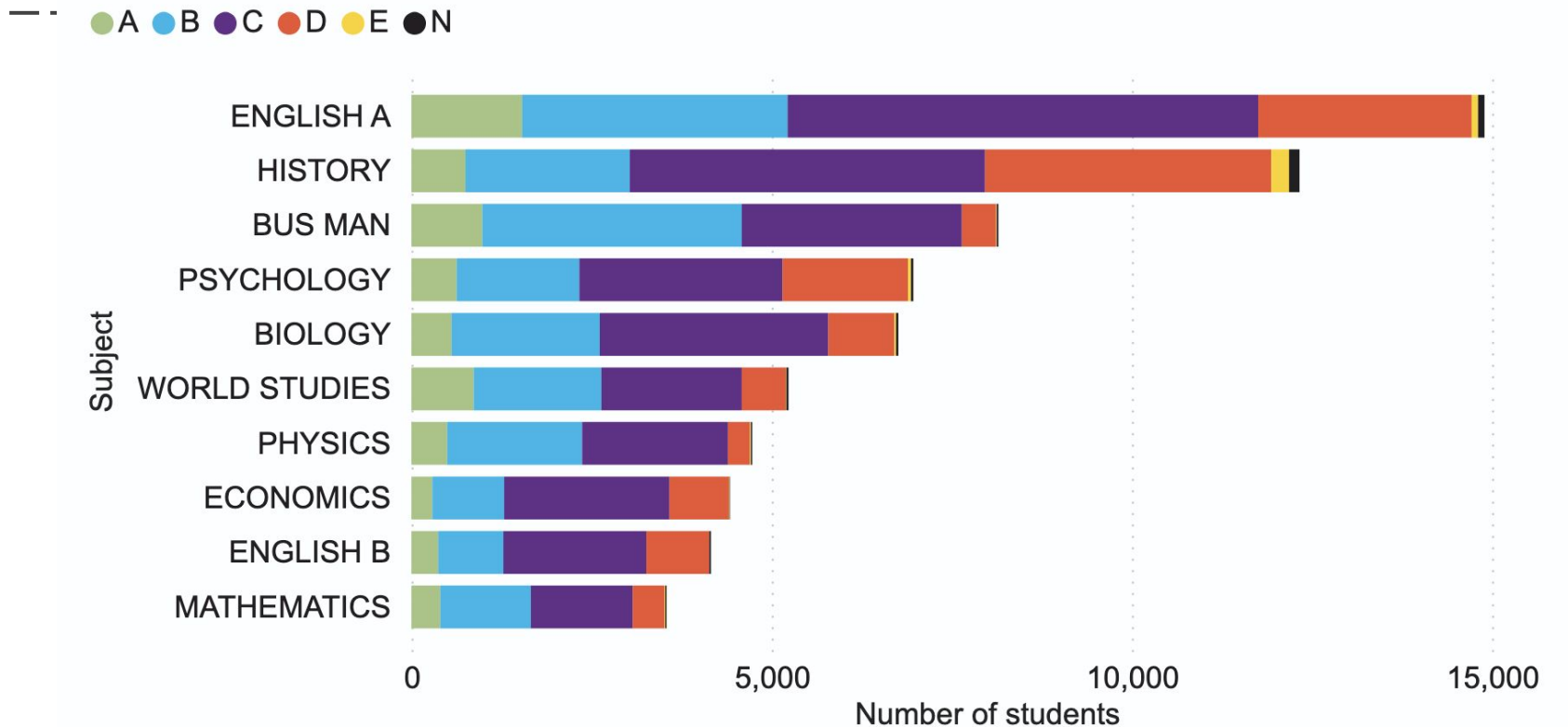
Class of 2025: Global Extended Essay Scores

Grade distribution percentage by subject group

Result	Grade awarded						No grade awarded		Total
Subject group	A	B	C	D	E	Total	N	Total	
STUDIES IN LANGUAGE AND LITERATURE	14.3%	27.9%	40.2%	16.6%	0.5%	99.5%	0.5%	0.5%	100.0%
LANGUAGE ACQUISITION	13.2%	23.6%	43.4%	19.0%	0.3%	99.4%	0.6%	0.6%	100.0%
INDIVIDUALS AND SOCIETIES	9.9%	28.0%	40.7%	19.9%	0.8%	99.4%	0.6%	0.6%	100.0%
SCIENCES	8.9%	32.1%	45.5%	12.8%	0.3%	99.6%	0.4%	0.4%	100.0%
MATHEMATICS	11.3%	35.5%	39.9%	12.4%	0.3%	99.5%	0.5%	0.5%	100.0%
THE ARTS	14.5%	21.7%	37.8%	23.7%	1.5%	99.1%	0.9%	0.9%	100.0%
INTERDISCIPLINARY	10.6%	26.5%	41.7%	19.4%	1.2%	99.3%	0.7%	0.7%	100.0%
Total	11.2%	28.3%	41.4%	17.9%	0.7%	99.4%	0.6%	0.6%	100.0%

May 2025: Global - Top 10 extended essay subjects

Top 10 extended essay subjects



How is it supervised?

— — —

- Students are expected to work **independently**.
- Each student will be assigned an **EE Supervisor** who will provide **3-5 hours of advice and support** throughout the process. Communication between student and supervisor is a mix of informal check in conversations and 3 formal meetings. The **student is expected to be the initiator of these discussions**.
- **Mr. Peters** provides additional support in role as EE Coordinator.
 - Provides timeline of checkpoints to help students stay on track in the process
 - Offers various help sessions
 - Available for support and questions.
- Students in **Core/TOK** this year will also have class time devoted to the EE process.

When is this due?

— — —

The final version of the EE and the required reflection are due in the **Fall of 2026**.

Between now and then there will be various due dates for research, outlines, partial drafts, and reflections.

Due dates for these checkpoints, as well as small assignments related to the EE process, will be in **Canvas**.

Managebac will be used for submitting a variety of documents during the process as well as the final EE file.

How is it assessed?

Criterion	Guiding Question	Marks Available
A: Framework for the Essay	Do the research question, methods, and structure provide an effective framework for the essay?	6
B: Knowledge and Understanding	Does the student demonstrate knowledge and understanding of the subject matter used in their research?	6
C: Analysis and line of argument	Does the student analyze the information presented in the essay and produce a coherent line of argument?	6
D: Discussion and Evaluation	Does the student discuss the findings and evaluate the essay?	8
E: Reflection	Does the student evaluate evaluate the effect of the EE process on them as a learner?	4

What can students write about?

— — —

While they have a great deal of freedom in selecting a topic, all essays **must fall under one of the available IB subjects** and should be in a subject that student is studying.

It is HIGHLY recommended that students write their EE in a subject they are studying in school. For example, if a student is not taking Psychology, it does not make sense to choose that subject area as they will be unfamiliar with important content, terminology, and research methods.

What are the IB Subjects they can choose from?

— — —

Group 1:

Language and Literature (English)

Group 2:

Language Acquisition

Group 3:

Business Management, Economics, Geography, Global Politics, History, Digital Society, Philosophy, Psychology, Social & Cultural Anthropology, World Religions

Group 4:

Biology; Chemistry; Computer Science; Design Technology; Physics; Sports, Exercise & Health Science

Group 5:

Mathematics

Group 6:

Dance, Film, Music, Theater, Visual Arts

Interdisciplinary Subjects:

Environmental Systems & Societies, Literature & Performance, World Studies

Where can you find information about the different subjects?

— — —

All students have been enrolled in the Class of 2027 EE Canvas Course

The Subject Guides and Rubrics Page on the EE Canvas Course has links to the guide and the specific rubric for each subject.

There is also plenty of helpful information in the course, including a timeline and additional EE resources.

What can you do as a parent?

— — —

Be supportive

Ask questions

Check the [Subject Guides](#) in Canvas

Be aware of major deadlines: For example, on **January 23** students will be submitting their EE proposal, indicating their chosen topic and preliminary research question

By approximately **May 1**, students will have written approximately 2000 words (8 pages)

EE Timeline at WL

- **Dec-Jan:** Initial research, EE Proposal with **Research Question**, Supervisor matching and first meeting
- Feb-March:** Continued research, EE Outline, Optional check ins with supervisor
- April-May:** Partial draft of approximately 2000 words submitted, Second meeting with supervisor, Continued Research, **Status Check**
- Summer:** Finish research and writing
- September:** Final rough draft due, Meeting with supervisor
- Oct-Dec:** Making final revisions, Final EE due, Final meeting with supervisor (viva voce), reflection

The EE is a unique
chance to do research
on something that is
interesting or
meaningful to each
student!

I hope they will take
advantage of the
opportunity!



Please reach out if you have any questions!
david.peters@apsva.us