



# PARENT TEACHER STUDENT ASSOCIATION

## September 11, 2025 Meeting



# WELCOME



Scan this code to become a member while you wait and join our Facebook page Washington-Liberty High School PTA!

If you're a teacher, please be sure to enter the raffle for a free membership!



# MEETING AGENDA

Washington-Liberty  
**PTA**<sup>®</sup>  
*everychild.onevoice.*<sup>®</sup>

**Introductions + welcome**  
**Budget (presentation + approval)**  
**Membership (presentation + approval)**  
**Principal Duncan**  
**Fundraising Discussion**  
**Committee & Representative Updates**  
**Volunteer Opportunities**  
**Non-PTSA events (snap a photo)**  
**Raffle**



# INTRODUCTIONS + WELCOME

## Meet your Board!



Tina O'Hara  
*VP Outreach*



Tim Schmitt  
*VP Membership*



Madelon Brennan  
*Assistant Treasurer*



Jenn Wagener  
*Treasurer*



Janeth Valenzuela  
*Hispanic Parents Committee*



Jenn Piatt  
*President*



Ms. Shivers  
*W-L Administration*



Sharon Hebert  
*VP Fundraising*



Cassandra Keating  
*Secretary*



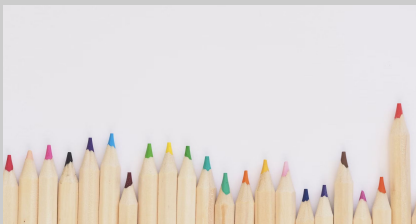
# INTRODUCTIONS + WELCOME

What we do!

Washington-Liberty  
**PTA**<sup>®</sup>  
*everychild.onevoice.®*

## Student and Staff Support & Events

- Reflections Art Contest
- Student of the Semester
- Welcome Back Staff Lunch
- Homecoming Game Concessions Night
- Science Fair
- Teacher Appreciation Lunches
- Support of Hispanic Parents Committee
- Holiday Bazaar
- Formals for Five
- Senior Picnic
- Senior Boat Party
- Graduation Signs
- Monthly meetings



## Fundraising

- Dine-out Coordination
- Grocery Card Program
- Plant Sale
- No fuss fundraiser

## Communications

- Class Liaisons
- Middle School Liaisons
- Reps to County-Level
- Newsletter





# INTRODUCTIONS + WELCOME

## Calendar Year Agenda



**OCTOBER 16th:** Voter Education for Youth & Families

**NOVEMBER 6th:** Immigration Panel (check date!)

**DECEMBER 4th:** Holiday Party (potluck)

**JANUARY 15th:** Academic Support (Zoom)

**FEBRUARY 26th:** Safe Internet

**MARCH 26th:** Summer programs youth & teens

**APRIL 30th:** Field Trip to School Board

**MAY 21st:** Panel from Local Elected Officials

**JUNE 4th:** End of School Celebration (potluck)



# INTRODUCTIONS + WELCOME

## PTSA GOALS

Washington-Liberty  
**PTA**<sup>®</sup>  
*everychild.onevoice.®*



- ★ Increase Membership
- ★ Financial Solvency
- ★ Document Management
- ★ Meeting participation
- ★ Advocacy
- ★ Recruitment of future leaders
- ★ Increased communication
- ★ Increased engagement with HPC



# BUDGET REVIEW + APPROVAL





# '24-'25 BUDGET REVIEW

Washington-Liberty  
**PTA**  
*everychild.onevoice.®*

Revenue		Direct		2024-25	
	<u>Revenue</u>	<u>Expenses</u>	<u>Net Revenue</u>	<u>Budget</u>	<u>Variance</u>
Contributions/ Donations	\$11,566.76	-	\$11,566.76	\$14,000.00	(\$2,433.24)
Membership Dues	\$4,410.37	-	\$4,410.37	\$5,500.00	(\$1,089.63)
Grocery Card Programs	\$1,083.98	-	\$1,083.98	\$1,000.00	\$83.98
Dine Out and Misc Fundraisers	\$502.26	-	\$502.26	\$2,500.00	(\$1,997.74)
<u>Plant Sale</u>	<u>\$13,284.43</u>	<u>\$7,881.70</u>	<u>\$5,402.73</u>	<u>\$8,000.00</u>	<u>(\$2,597.27)</u>
<b>Totals</b>	<b>\$30,847.80</b>	<b>(\$7,881.70)</b>	<b>\$22,966.10</b>	<b>\$31,000.00</b>	<b>(\$8,033.90)</b>
Holiday Bazaar					
Vendor Registration/Tables	\$9,161.90	\$9,220.90	(\$59.00)	\$0.00	(\$59.00)
<u>Student Clubs</u>	<u>\$16,394.97</u>	<u>\$16,394.97</u>	<u>\$0.00</u>	<u>\$0.00</u>	<u>\$0.00</u>
<b>Totals</b>	<b>\$25,556.87</b>	<b>\$25,615.87</b>	<b>(\$59.00)</b>	<b>\$0.00</b>	<b>(\$59.00)</b>
<b>Revenue Total</b>	<b>\$ 56,404.67</b>	<b>\$ 17,734.17</b>	<b>\$ 22,907.10</b>	<b>\$ 31,000.00</b>	<b>(\$8,092.90)</b>





# '24-'25 BUDGET REVIEW

Washington-Liberty  
**PTA**  
*everychild.onevoice.®*

## PTA Expenses:

	<u>Expenses</u>	<u>24-'25 Budget</u>	<u>Variance</u>
Teacher & Club Grants	\$9,987.95	\$13,000.00	\$3,012.05
Teacher & Custodian Appreciation	\$3,119.44	\$4,300.00	\$1,180.56
Student of the Semester	\$2,115.71	\$2,000.00	(\$115.71)
Hispanic Parent Events	\$1,906.51	\$1,500.00	(\$406.51)
Admin (insurance, bank, printing, etc.)	\$1,506.89	\$1,350.00	(\$156.89)
Teacher Back to School Lunch	\$1,020.88	\$2,500.00	\$1,479.12
Principal's Fund	\$1,000.00	\$1,000.00	\$0.00
PTA/CCPTA Dues	\$923.75	\$1,000.00	\$76.25
<u>All other Items</u>	<u>\$897.56</u>	<u>\$7,000.00</u>	<u>\$6,102.44</u>
<b>Totals</b>	<b>\$22,478.69</b>	<b>\$33,650.00</b>	<b>\$11,171.31</b>

## Senior Class Expenses

	<u>Revenue</u>	<u>Expenses</u>	<u>Net</u>	<u>24-'25 Budget</u>	<u>Variance</u>
Senior Boat Party					
Boat Party Expenses		\$33,886.64	\$33,886.64	\$28,000.00	(\$5,886.64)
Boat Party Tickets	\$20,165.22	\$81.00	\$20,084.22	\$21,000.00	(\$915.78)
Senior Donations	\$12,443.29		\$12,443.29	\$13,000.00	(\$556.71)
<u>Senior Picnic/Other Events</u>	<u>\$1,435.00</u>	<u>\$5,190.86</u>	<u>\$3,755.86</u>	<u>\$5,000.00</u>	<u>\$1,244.14</u>
<b>Totals</b>	<b>\$34,043.51</b>	<b>\$39,158.50</b>	<b>\$5,114.99</b>	<b>(\$1,000.00)</b>	<b>(\$6,114.99)</b>

<b>Expenses Total</b>	<b>\$27,593.68</b>	<b>\$32,650.00</b>	<b>\$5,056.32</b>
-----------------------	--------------------	--------------------	-------------------



# '24-'25 BUDGET REVIEW



	<u>Actuals</u>	<u>Budget</u>	<u>Variance</u>
Revenue Total	\$22,907.10	\$31,000.00	(\$8,092.90)
<u>Expenses Total</u>	<u>\$27,593.68</u>	<u>\$32,650.00</u>	<u>\$5,056.32</u>
<b>Net Income</b>	<b>(\$4,686.58)</b>	<b>(\$1,650.00)</b>	<b>(\$3,036.58)</b>

Cash at July 1, 2024	\$27,890.43
----------------------	-------------

Cash at June 30, 2025	\$35,485.25
-----------------------	-------------



# PROPOSED BUDGET

Washington-Liberty  
**PTA**<sup>®</sup>  
*everychild.onevoice.®*

	<u>2024-'25 Actual</u>	<u>Proposed Budget</u>
Contributions/ Donations	\$11,566.76	\$12,000.00
Senior Class Donations	\$12,443.29	\$12,000.00
Membership Dues	\$4,410.37	\$5,000.00
Dine Out and Misc Fundraisers	\$502.26	\$1,200.00
<u>Plant Sale (Net)</u>	<u>\$5,402.73</u>	<u>\$5,000.00</u>
<b>Total Revenue</b>	<b>\$34,325.41</b>	<b>\$35,200.00</b>
Teacher & Club Grants	\$9,987.95	\$10,000.00
Senior Class Expenses (Net)	\$6,114.99	\$8,000.00
Teacher & Custodian Appreciation	\$3,119.44	\$3,250.00
Student of the Semester	\$2,115.71	\$2,250.00
Teacher Back to School Lunch	\$1,020.88	\$2,000.00
Hispanic Parent Events	\$1,906.51	\$2,000.00
PTA/CCPTA Dues	\$923.75	\$1,890.00
PTA Programs	\$0.00	\$1,750.00
Admin (insurance, bank, printing, etc.)	\$1,506.89	\$1,560.00
All other Items	\$897.56	\$1,500.00
<u>Principal's Fund</u>	<u>\$1,000.00</u>	<u>\$1,000.00</u>
<b>Total Expenses</b>	<b>\$28,593.68</b>	<b>\$35,200.00</b>



# BUDGET APPROVAL

Do we have a motion to approve the budget? (ex: “I move that...”)

Do we have a second of such motion? (ex: “I second the motion...”)

Do we have any debate?

Vote on the motion... “All in favor”.... “All opposed”



# PRINCIPAL DUNCAN

# Washington-Liberty High School

*(2025-2026 School Year)*



## September PTA Meeting

*September 11, 2025*

(School Updates)



# Important Dates & Reminders:

## September 2025

- **Sept. 16:** NWEA (MAP) Testing (Modified Schedule)
- **Sept. 17 & 18:** School Picture Days
- **Sept. 23:** Rosh Hashanah (NO SCHOOL FOR STUDENTS)
- **Sept. 25:** Back to School Night from 6-7 PM (6:00- Resource/Club Fair; 7:00 class visits)
  - ◆ Special Education Open House; 6:00-6:55 PM in the Little Theater)
- **Sept. 27:** W-L Centennial Celebration Open House 10:00-1:00 pm

## October At-a-Glance

- **Oct. 2:** Yom Kippur (NO SCHOOL FOR STAFF AND STUDENTS)



WASHINGTON-LIBERTY  
HIGH SCHOOL





# *School Overview*

---

- ❑ School Leadership Updates
- ❑ School Data
- ❑ SY24-25 School Achievement

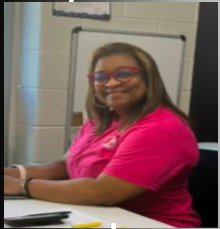
# W-L Administrators



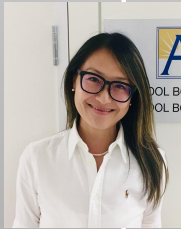
**Alexander Duncan, III,**  
Principal



**Tammy Ignacio**  
Transition Administrator  
(Special Education)



**Timica Shivers**  
Assistant Principal  
(12th; Math; Science)



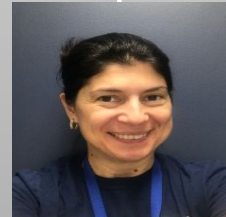
**Maggie Hsu**  
Assistant Principal  
(11th; SPED)



**Tim Straka**  
Assistant Principal  
(9th/10th; Social Studies)



**Katlyn Bennett**  
Assistant Principal  
(9TH/10TH; English)



**Vica Irving**  
Assistant Principal  
(9th/10th; EL)

# W-L Administrators



**Alexander Duncan, III,**  
Principal



**Tammy Ignacio**  
Transition Administrator  
(Special Education)



**Justin Bolfek**  
Director of Student Activities



**Kevin Healy**  
Assistant Director  
of Student Activities



**Dara Williams**  
Director of School Counseling



**Suzanne Paul**  
Dean of Students



**Julie Cantor**  
IB Coordinator

# School Enrollment & Data

## Activities & Athletics:

1334 student athletes

Girls track region champs

*Washington Post* “all met” athletes

Over 150 student led clubs

## Preliminary SOL Pass Rate (math, reading, & science):

Math- 84.5%

Science- 83.5%

Reading- 81.6%

**IB Diploma: 87.4%**

(versus 81.3 worldwide)

Pass Rate: 80%

Grade Level	Student Enrollment
9th	586
10th	691
11th	709
12th	662
<b>TOTAL</b>	<b>2648</b>





# ***Operational Updates***

---

- ❑ **Yondr Implementation**
- ❑ **Student Movement Updates**
- ❑ **“Generals Period” Updates**

# Yondr Implementation

## *Community Listening Sessions*

- Throughout the summer and into the fall we've held listening sessions with the community to introduce the new principal and discuss Yondr implementation.
- We are currently still in the initial phase of implementation but we look forward to additional opportunities to engage our community in the implementation process.

## *Staggered Dismissal*

- This year, on the second day of school, W-L began staggered dismissal to help reduce traffic in stairwells and hallways.
- With Yondr implementation, we

## *Yondr Updates & Reminders:*

- All APS high school students receive a Yondr pouch
- At morning arrival, all students show their student IDs or StudentVue. This is a safety/security measure that helps administration and security verify all students as they enter.
- Students are asked to show their IDs and unlocked pouches as they pass checkpoints, e.g.



# Yondr Implementation

## *Entry/Transition Procedures*

- Door 2: Students that get dropped off or walk should show their student IDs and unlocked pouches at door 2.
- Door 5: Students that ride an APS bus or drive should show should their student ID and unlocked pouches and enter at door 5.
- Door 6: Currently, students with no phone or pouch are entering door 6. There, our team is manually checking in students. We are currently developing systems to expedite this process.

NOTE- We are currently assessing door 6's entry process to identify more efficient ways of checking in students.

## *School Response*

Students may use our Student Resource room (space near the in-school suspension room) to use their cell phone if needed. If students are identified with phones out outside the designated location:

- ➔ 1ST OFFENSE: Reminder to pouch phone; log infraction in Synergy; and contact parent/caregiver/guardian, i.e. ParentSquare, etc.



# School Operations Updates

## *Senior Lunch Process*

- Seniors may travel outside the school for lunch. They will exit (and unlock their pouches) at door 1.
- Seniors are expected to be on-time for class and demonstrate adherence to the Code of Student Conduct to maintain this privilege.

## *Options During Lunches*

- During lunches students may eat in the cafeteria, outside in the courtyard, with friends in the main corridor (outside the cafeteria), or outside near the cafeteria (commons area).
- Students may purchase lunch from the cafeteria or bring their lunch (microwaves are available in the cafeteria).
- Students are able to visit the library during lunch if they get a pass from the library prior to the cafeteria.

## *Principal's Advisory Council*

# Generals Period Updates

## *General Information*

### **First two weeks:**

- There was no movement in GP during the first two weeks of school.
- W-L teaches were asked to focus on “connection before content” to build relationship and foster community in the classroom.
- They also reviewed school-wide expectations and APS Code of Conduct. Students were also engaged in grade level assemblies to review school-wide processes.

### **Ongoing after first two weeks:**

- Teachers will continue to foster community by helping students connect to the content.
- Staff are asked to engage with community building exercises, such as community circles, during GP.

### **“Motivational Monday’s”: No movement day**

- This no movement day sets the tone for the week;
- Students may set goals; organize assignments, and review notes for upcoming assessments;
- Students may also email teachers to set up time for review, retakes, etc.



# ***Counseling Updates***

---

- ❑ **Student Support Team (SST): “Who’s Who”**
- ❑ **Areas of Focus**
- ❑ **Upcoming Dates & Timeline**

# Counseling Updates -Student Services Team

## School Counselors

Dewey Cashwell  
Alysha Damratowski  
Erin Gagen  
Megan Grasso  
Nicole Low\*  
Irma Medrano, EL Counselor  
Jessica "Jessie" Osher  
Elizabeth "Lizzy" Palmer  
Regla Perez-Pino\*  
Alain Poutre  
Atiya Rehman  
Ronald Valdez, El Counselor  
Bridgette Wanzer-McCoy  
Carolea "Tyler" Wynnyk

College/Career Counselor

## School Psychologists

Lori Ockerman  
Ricia Weiner

## School Social Workers

Colleen Greenwood  
Britnee Stephens

## Equity and Excellence Coordinator

James Sample

## Testing Coordinator

Robin Stewart

## Registrar

Kiare Mays

Administrative Assistants

# Counseling Updates - 2025-26 Areas of Focus

- ★ Academic Planning
- ★ Classroom Guidance
- ★ College/Career Opportunities
- ★ Family Engagement

# Counseling Updates - Programs

- ★ 9/8/25 - 9/19/25 SchoolLinks Lessons (Grade 12)
- ★ 9/10/25 -Senior Parent Night 6:30 p.m.
- ★ 9/15 - 9/19 - Suicide Awareness Week
- ★ Saturday Application Help
  - 9/27/25
  - 10/11/25
  - 10/25/25
- ★ 10/6/25 - 10/24 Signs of Suicide (S.O.S) Lessons (Grade 10)
- ★ 10/7/25 - APS Career & College Fair (TJ Community Center 6-8pm)
- ★ 10/8/25 - PSAT Testing & CPR Testing (seniors only)
- ★ 10/15/25 - Alcanza Field Trip
- ★ 10/27/25 - 10/31/25 Red Ribbon Week
- ★ 10/31/25 - Latino Youth Leadership Conference
- ★ 11/12/25 - 11/13/25 Bullying Lessons (Grade 9)



# *Testing Updates*

---

- ❑ What is NWEA (MAP)?
- ❑ What students will take the assessment?
- ❑ How does the assessment work?
- ❑ Will it impact class grades?



# NWEA (MAP)

## What is MAP?

- The MAP is a multiple choice test (completed on the computer at school) that gauges student performance by measuring achievement and growth.

## What subjects will the MAP assess?

- At W-L, students currently complete the MAP assessment in two subject areas: English and math.
- Students will take three (3) **Math and English MAP assessments** throughout the year: Once in the beginning, another in the middle, and lastly at the end of the school year.

# NWEA (MAP)

## How does the MAP test work?

- The test adapts to students' responses and measures their skill level. Students cannot pass or fail the test, and the scores are not used for grades.
- As students expand their knowledge about a specific subject, their knowledge will grow and expand.
- This growth is measured using the MAP. Growth should be evident from test-to-test.

## Will the student's grade be affected by the MAP score? How will teachers use the MAP to plan instruction?

- Teachers can use data from the MAP assessment to help them plan their lessons around where you and your classmates need the most help, even

THE END 🤗





# MEMBERSHIP



**Please join the W-L PTSA and support our school and community.  
We are stronger when we work together.**



## **Benefits of Joining the PTSA:**

- Voting Rights
- Support School community
- Plugged in to community and events
- Forum for discussion of community issues
- Access to school leadership and elected officials



**Join here!!**





# MEMBERSHIP DUES CHANGE



## Current Membership fee and resulting revenue

Membership type	Dues	VAPTA + CCPTA	Processing fees	Remaining for PTSA
Family	\$20	$\$4.75 + .35 = \$5.10$	1% (.20)	\$14.70
Staff	\$5	$\$4.75 + .35 = \$5.10$	1% (.05)	-.15
Student	\$5	$\$4.75 + .35 = \$5.10$	1% (.05)	-.15

**NOTE: VA PTA Dues are going up now to \$4.75 (from \$3.75)**



# MEMBERSHIP DUES CHANGE



## Proposed Membership Dues Change for CY 25-26

Membership type	Dues	VAPTA + CCPTA	Remaining for PTSA
Family (parents and students) 1 Year	\$20	\$5.10	\$14.90
Staff	\$10 [NEW]	\$5.10	\$4.90
Student	\$5	\$5.10	-.10 (projected)

**Summary of proposed changes that require a vote: Increase staff to \$10**

**We intend to: save fees by moving to Givebacks, create a grandparents and a community support option (does not require vote)**



# MEMBERSHIP DUES APPROVAL

Do we have a motion to approve the budget? (ex: “I move that...”)

Do we have a second of such motion? (ex: “I second the motion...”)

Do we have any debate?

Vote on the motion... “All in favor”.... “All opposed”





# FUNDRAISING DISCUSSION



# COMMITTEE & REPRESENTATIVE UPDATES

HPC, CCPTA (vacant), ACTL, SEPTA



# VOLUNTEER OPPORTUNITIES



- **Student of the Semester:** help coordinate the process
- **Reflections:** coordinate WL art contest
- **Senior Events:** Picnic + Boat Party
- **Formals for Five:** gently used formal wear
- **SEPTA:** W-L representation at SEPTA (1)
- **CCPTA:** W-L representation at CCPTA (1)
- **\*Advocacy\*:** New, represent school and go to Legislature
- **Grants:** support teachers and students
- **Staff/Teacher Appreciation:** appreciation events
- **Fundraising Committee:** help PTSA meet the goals





# NON-PTSA EVENTS



- **Sept 12:** Feedback due to SEPTA re: impact of loss of federal funds (see: <https://www.arlingtonsepta.org/community-feedback/>)
- **Sept 16th:** WL NWEA Testing (*Modified Schedule, see ParentSquare*)
- **Sept 17th & 18th:** WL Picture Days
- **Sept 18th:** School Board Meeting, 7pm
- **Sept 18:** SEPTA Meeting @ Syphax
- **Sept 15:** Back to School Night
- **Sept 27th:** WL Centennial Open House, 10am-1pm
- **Sept 30:** SEPTA Student Support and Special Education for Families
- **Oct 8:** ACTL Meeting
- **Oct 9:** CCPTA Meeting



# PARENT TEACHER STUDENT ASSOCIATION

Next meeting: OCT 16 (in person, no potluck)

Washington-Liberty  
**PTA**<sup>®</sup>  
*everychild.onevoice.*<sup>®</sup>

# QUESTIONS & RAFFLE

Next meeting: October 16th!